

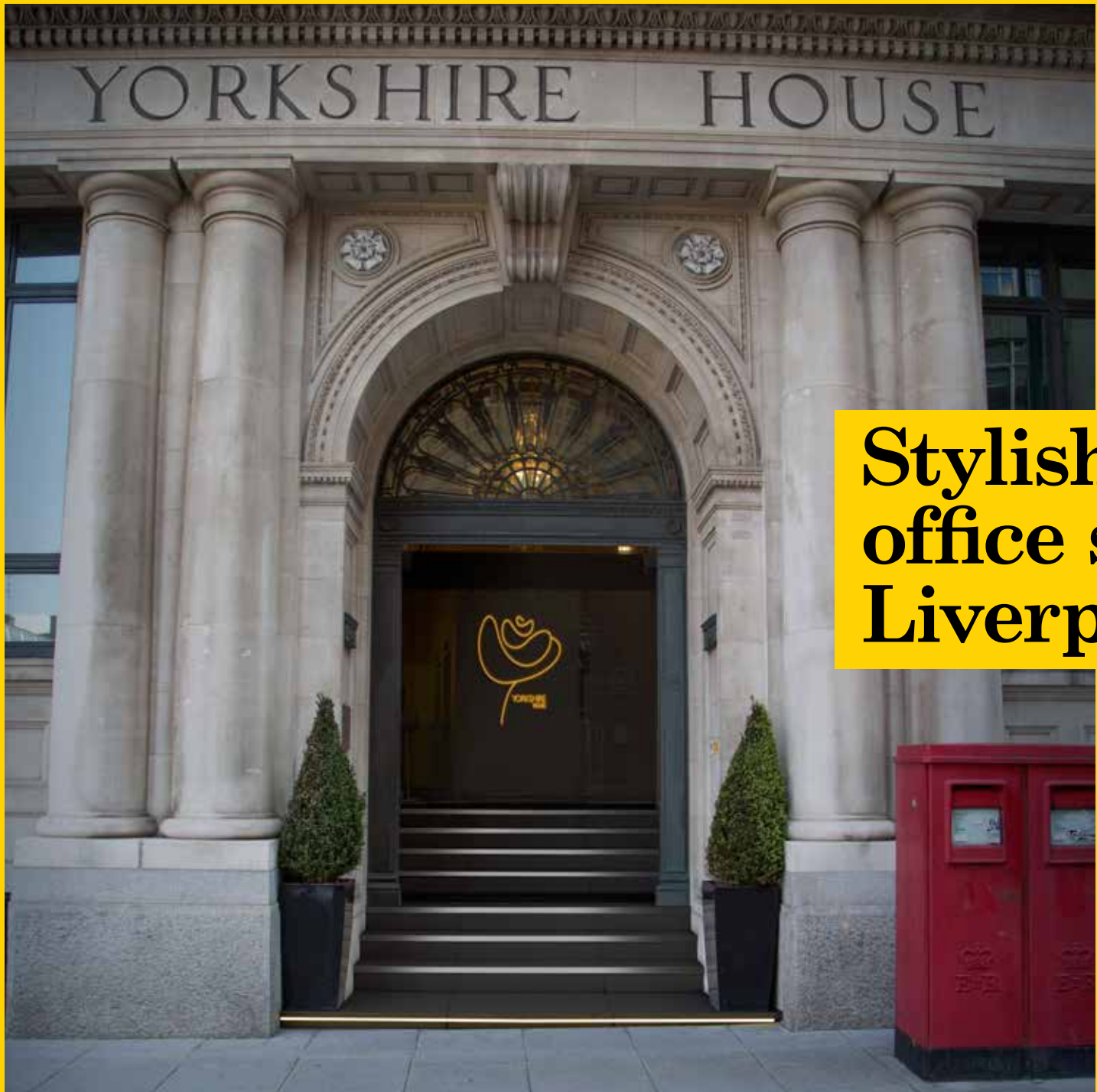


YORKSHIRE
HOUSE

An inspiring place to work

*Modern offices from
882 to 3143 sqft*






Stylish and contemporary office space in the heart of Liverpool's business district

With spacious and flexible floor plates, Yorkshire House offers an environment that is an inspiring place to work.

The building provides high class accommodation with beautiful architectural details combined with a stunning modern interior.

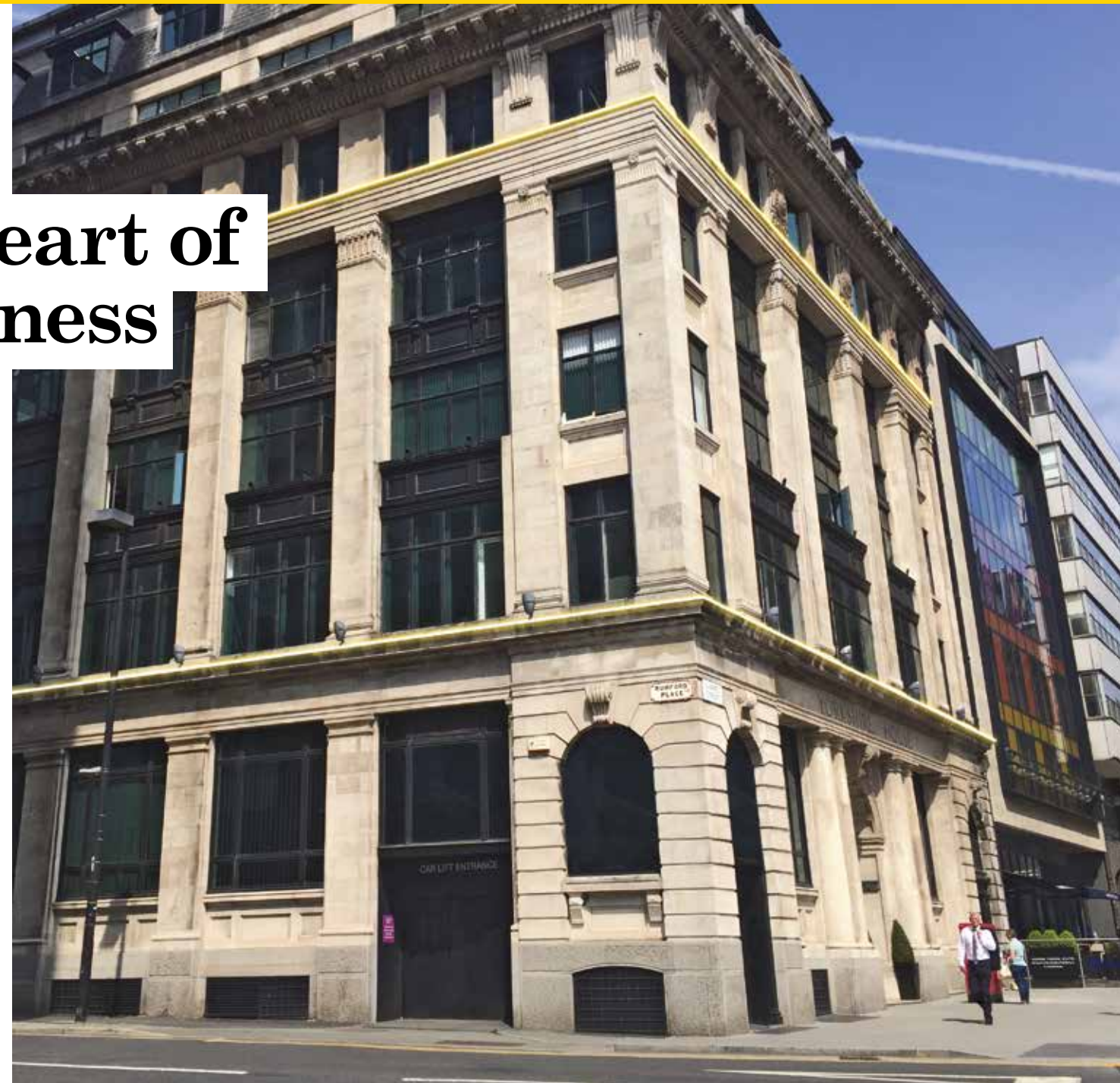
The new owners of Yorkshire House have embarked upon a major refurbishment of the building, including new entrance, foyer, enhanced common areas and refurbishment of available office floors.



In the heart of the business district

*Yorkshire House provides
bright contemporary office
space.* The building offers
flexible suites of high quality
office accommodation with
stunning views towards the
River Mersey.

Transport links are superb
and the building has onsite
parking in the basement.



An ideal location

All within half a mile radius



1

UNESCO Site

2

Galleries

7

Museums

17

Hotels

5

Car Parks

18

Restaurants

3

Train Stations

26

Bars/Cafes

2

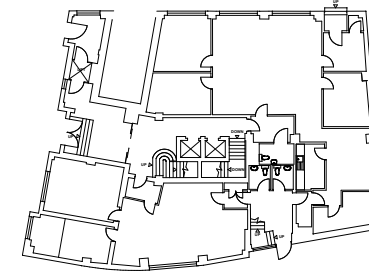
Shopping Centres

Yorkshire House

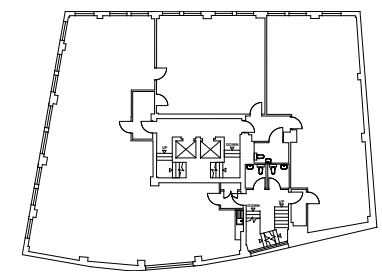
Accommodation

Suite	Size sq.ft	Car spaces
Ground Floor (front)	882	1
Fourth Floor (rear)	1,583	2
Sixth Floor	3,143	2
Seventh Floor	2,313	2

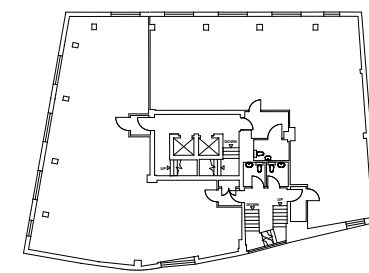
Ground Floor



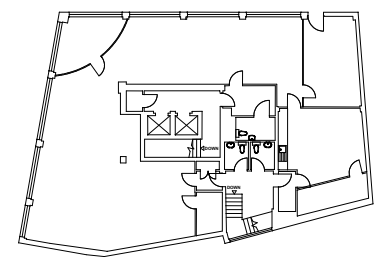
Fourth Floor



Sixth Floor



Seventh Floor



Specification

- Passenger lifts from sub-basement parking to the seventh floor
- Cycle storage
- Shower facilities
- Comfort cooling
- Perimeter trunking
- 14 secure car parking spaces in basement
- 24 hour access





YORKSHIRE HOUSE
18 Chapel Street, Liverpool, L3 9AG

Neil Kirkham
CBRE

t: 0151 471 4933
m: 07584 300859
e: neil.kirkham@cbre.com

Andrew Owen
Worthington Owen

t: 0151 363 3877
m: 07798 576 789
e: Andrew@worthingtonowen.com

CBRE



A Millfield Estates Building

Millfield
ESTATES